

Biffi Pneumatic Booster

Low Pressure Pneumatic Component



This page is intentionally left blank.

Table of Contents

Section 1: Introduction

1.1	Main Technical Differences from the Previous Version	1
1.2	Old and New Version Codes Cross-check	3

Section 2: References

References	5
------------------	---

Section 3: Biffi Pneumatic Booster

3.1	Biffi Booster Set-up	9
3.2	Setting of Actuator's Operating Time by Booster	11

This page is intentionally left blank.

Section 1: Introduction

According to the continuous improvement process of the Biffi product range, the decision has been made that the Biffi Volume Booster Ver2020 will be obsoleted and will be replaced with the new version 2021.

Biffi Volume Booster is a low-pressure pneumatic component that converts a low volume pressure signal into a 1:1 ratio high volume output. It is specifically designed for both modulating and on-off pilot pressure signals and provide fast response and stability to the control system.

1.1 Main Technical Differences from the Previous Version

The new version is engineered to better fit to our customer needs with a unique design which allows optimized features and extended capabilities.

- Introduction of new sizes for performance optimization (3/8 in. instead of 1/4 in., 3/4 in. instead of 1/2 in.).
- New shutter design to allow more precise regulation capability for air inlet and exhaust. The shutter for inlet or exhaust function have now different design.
- New regulator screw for air inlet and exhaust.
- Addition of a second inlet hole in the body to grant a reverse installation capability, and reduce the tube length and bend.
- In order to grant the compatibility with the new sizes 3/8 in. and 3/4 in. with the control panel components sizes 1/4 in. and 1/2 in., the new booster sold as spare part will be equipped with reduction fittings.

Figure 1. Old Version

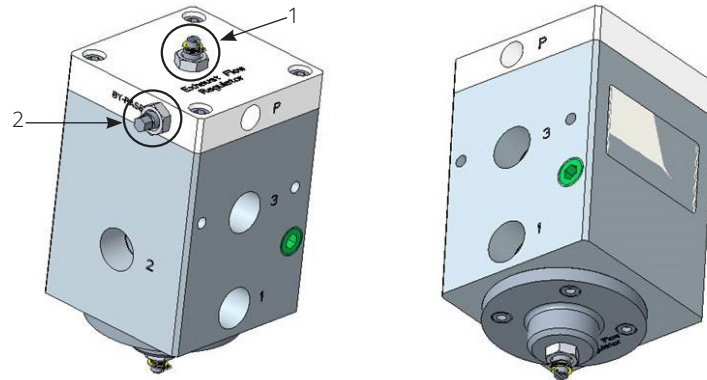
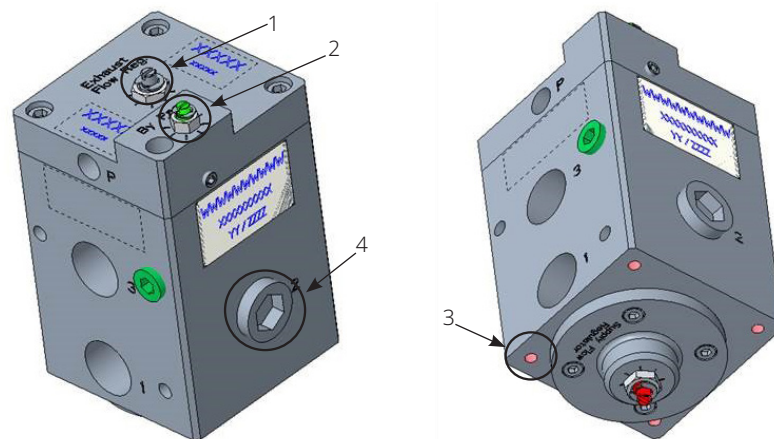
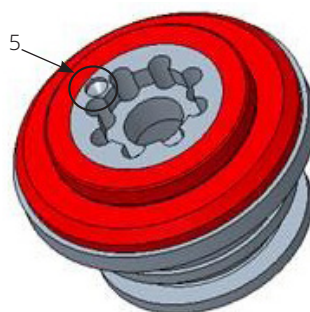


Figure 2. New Version



1. The flow regulation screw is now available with visual indication lines.
2. Bypass screw is now on the Booster top for better accessibility and prevent accidental complete unscrewing.
3. Additional holes on the bottom for the installation with optional bracket.
4. Additional hole on the front to grant reverse installation.
5. The shutters (supplied in the spare kit) now have different design for inlet or exhaust function. Exhaust shutter has a spot indication on board to clearly recognize it.

Figure 3. Shutter



1.2 Old and New Version Codes Cross-check

Table 1 shows the correspondence between the old codes and the new codes of the complete booster spare unit.

Table 1. Old and New Codes of Booster Spare Unit

Old code	New code	Old code	New code
2P27101500	4P271X2502	2P271055S1	2P271X55R1
2P27101501	4P271X2501	2P271055S2	2P271X55R2
2P27101502	4P271X2502	2P271A1500	4P271B2502
2P271015M2	4P271X25R2	2P271A1501	4P271B2501
2P271015R1	4P271X25R1	2P271A1502	4P271B2502
2P271015R2	4P271X25R2	2P271A15M1	4P271B25R1
2P271015RZ	4P271X25R2	2P271A15M2	4P271B25R2
2P271015S1	4P271X25R1	2P271A15R1	4P271B25R1
2P271015S2	4P271X25R2	2P271A15R2	4P271B25R2
2P27103500	4P271X4502	2P271A15S2	4P271B25R2
2P27103501	4P271X4501	2P271A3500	4P271B4502
2P27103502	4P271X4502	2P271A3501	4P271B4501
2P271035M2	4P271X45R2	2P271A3502	4P271B4502
2P271035R1	4P271X45R1	2P271A35M1	4P271B45R1
2P271035R2	4P271X45R2	2P271A35M2	4P271B45R2
2P271035S1	4P271X45R1	2P271A35R1	4P271B45R1
2P271035S2	4P271X45R2	2P271A35R2	4P271B45R2
2P27105500	2P271X5502	2P271A35S1	4P271B45R1
2P27105501	2P271X5501	2P271A35S2	4P271B45R2
2P27105502	2P271X5502	2P271A5500	2P271B5502
2P271055M2	2P271X55R2	2P271A5501	2P271B5501
2P271055R1	2P271X55R1	2P271A5502	2P271B5502
2P271055R2	2P271X55R2	2P271A55M2	2P271B55R2
2P271055RZ	2P271X55R2	2P271A55R1	2P271B55R1
2P271A1500	4P271B2502	2P271A55R2	2P271B55R2
2P271A1501	4P271B2501	2P271A55S1	2P271B55R1
2P271A1502	4P271B2502	2P271A55S2	2P271B55R2

Table 2 shows the correspondence between the old codes and the new codes of the the spare parts kit.

Table 2. Old and New Codes of Spare Parts Kit

Old code	New code
G02P271A1502	G02P27101502
G02P271A15R1	G02P271015R1
G02P271015S1	G02P271015R1
G02P271015M2	G02P271015R2
G02P271A15M2	G02P271015R2
G02P271015RZ	G02P271015R2
G02P271A15R2	G02P271015R2
G02P271015S2	G02P271015R2
G02P271A15S2	G02P271015R2
G02P271A3502	G02P27103502
G02P271035S1	G02P271035R1
G02P271A35S1	G02P271035R1
G02P271035M2	G02P271035R2
G02P271A35M2	G02P271035R2
G02P271A35R2	G02P271035R2
G02P271035S2	G02P271035R2
G02P271A35S2	G02P271035R2
G02P271A5502	G02P27105502
G02P271A55R1	G02P271055R1
G02P271055S1	G02P271055R1
G02P271A55S1	G02P271055R1
G02P271055M2	G02P271055R2
G02P271A55M2	G02P271055R2
G02P271055RZ	G02P271055R2
G02P271A55R2	G02P271055R2
G02P271055S2	G02P271055R2
G02P271A55S2	G02P271055R2

Section 2: References

- IEC 61508
- Machinery Directive 2006/42/EC
- PED 2014/68/EU
- ATEX Directive 2014/34/UE
- CU TR 012/2011 certification for the safety of the equipment in explosion proof environment



Kazakhstan - EAC

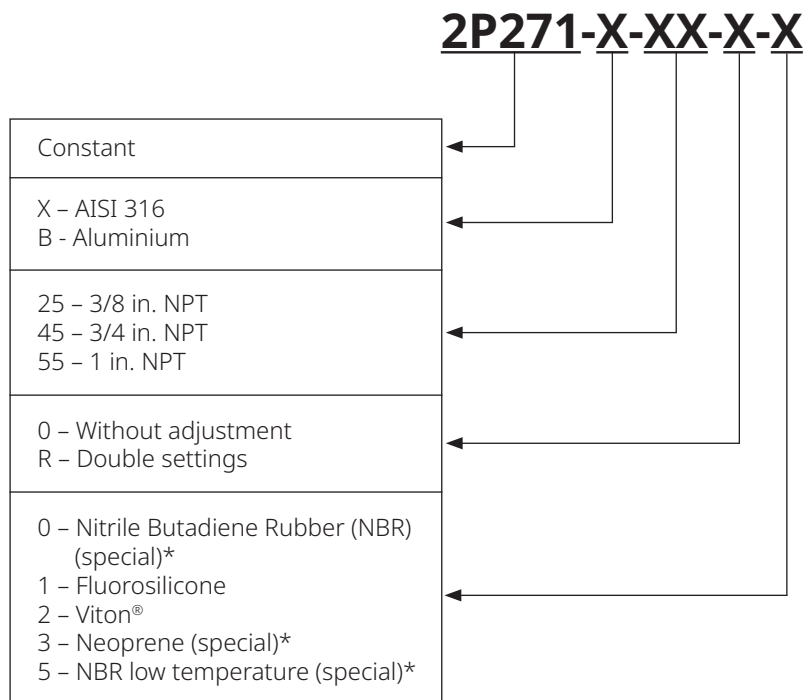
Section 3: Biffi Pneumatic Booster

The high capacity, fast response and stability you need are important characteristics of Biffi Volume Boosters. A wide range of signal to output pressure ratios, pipe sizes from 3/8 to 1 in. NPT, and flow capacities from 1 to 30 l/s provide a versatile selection.

Simplicity, reliability and economy are at the top of the list of design parameters. Supply pressure is maximum of 12 barg accepting air, nitrogen or sweet gas.

Supported standard ambient temperature ranges from -60 to +100 °C, special versions are available to accommodate Biffi Booster outside this temperature envelope.

Biffi Booster Code:



NOTE:
(Special)* - Contact factory before selecting the option.

Figure 4. Pneumatic Booster Exploded View

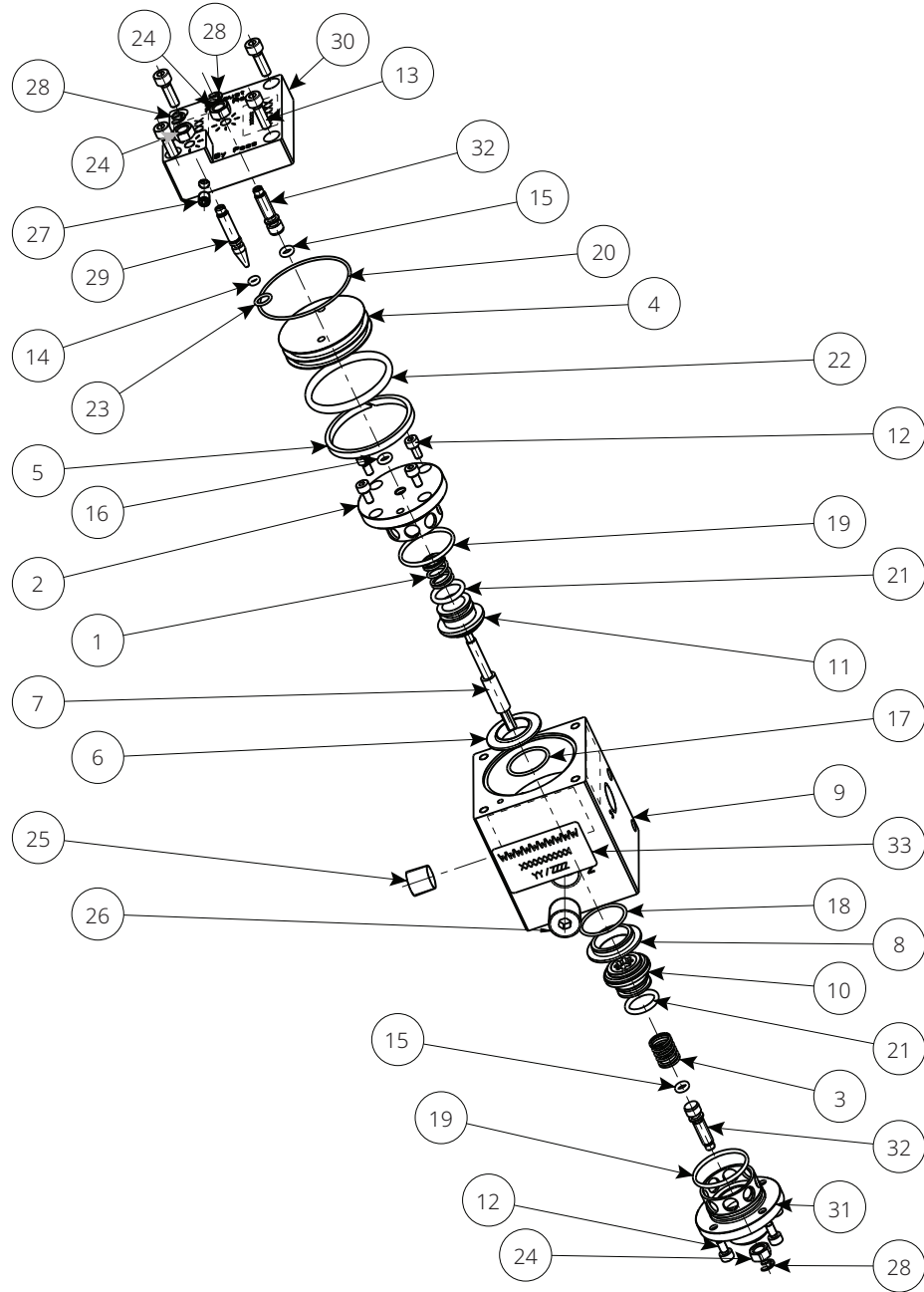


Table 3. Parts List

Item	Quantity	Description	Material	Other Materials Available	Spare
1	1	Spring	Stainless steel	N/A	-
2	1	Flange	316L SS	N/A	-
3	1	Spring	Stainless steel	N/A	-
4	1	Piston	316L SS	N/A	-
5	1	Sliding Ring	PTFE	N/A	-
6	1	Seat Helded	316L SS	N/A	-
7	1	Rod	316L SS	N/A	-
8	1	Seat Helded	316L SS	N/A	-
9	1	Body	316L SS	Aluminum (others special available)	-
10	1	ASS.PIST.BOOST.ING	316L SS+Viton	SS316+FLR (others special available)	X
11	1	ASS.PIST. BOOST.OUT	316L SS+Viton	SS316+FLR (others special available)	X
12	8	Screw	316 SS	N/A	-
13	4	Screw	316 SS	N/A	-
14	1	O-ring	Viton	FLR (others special available)	X
15	2	O-ring	Viton	FLR (others special available)	X
16	1	O-ring	Viton	FLR (others special available)	X
17	1	O-ring	Viton	FLR (others special available)	X
18	1	O-ring	Viton	FLR (others special available)	X
19	2	O-ring	Viton	FLR (others special available)	X
20	1	O-ring	Viton	FLR (others special available)	X
21	2	O-ring	Viton	FLR (others special available)	X
22	1	O-ring	Viton	FLR (others special available)	X
23	1	O-ring	Viton	FLR (others special available)	X
24	3	Nut	Stainless steel	N/A	-
25	1	Plug	316 SS	N/A	-
26	1	Plug	316 SS	N/A	-
27	1	Plug	316 SS	N/A	-
28	3	Elastic Ring	316 SS	N/A	-
29	1	Needle	316L SS	N/A	-
30	1	Cover	316L SS	Aluminum	-
31	1	Flange	316L SS	N/A	-
32	2	Stopper	316L SS	N/A	-
33	1	Tag	PVC sticker	N/A	-
34	1	Tag	PVC sticker	N/A	-

NOTES:

X- Recommended spare parts.
Spare parts kit code: See Figure 4.

3.1 Biffi Booster Set-up

Pneumatic Booster with Bypass is an air piloted pressure regulator with high flow rate. Booster compares pilot pressure to the cylinder chamber pressure and if the pilot pressure is higher than cylinder pressure, the supply shutter valve opens and the cylinder pressure increases up to pilot pressure. While, when the cylinder chamber pressure exceeds the pilot pressure, the exhaust shutter valve opens and the cylinder chamber pressure decreases up to pilot pressure.

Bypass puts in communication the air cylinder port with the pilot port. Bypass regulates pressure balancing speed between the two ports.

Figure 5. Biffi Booster Schematic Diagram with Double Regulations

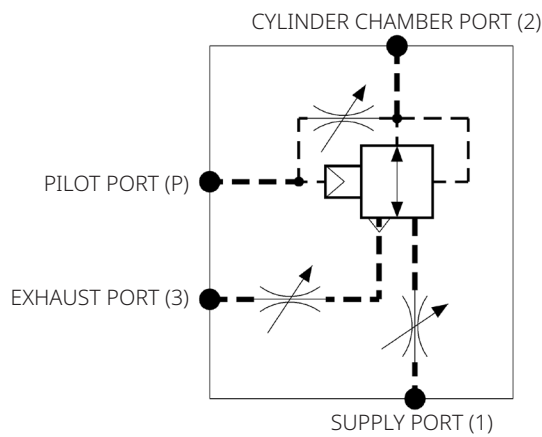
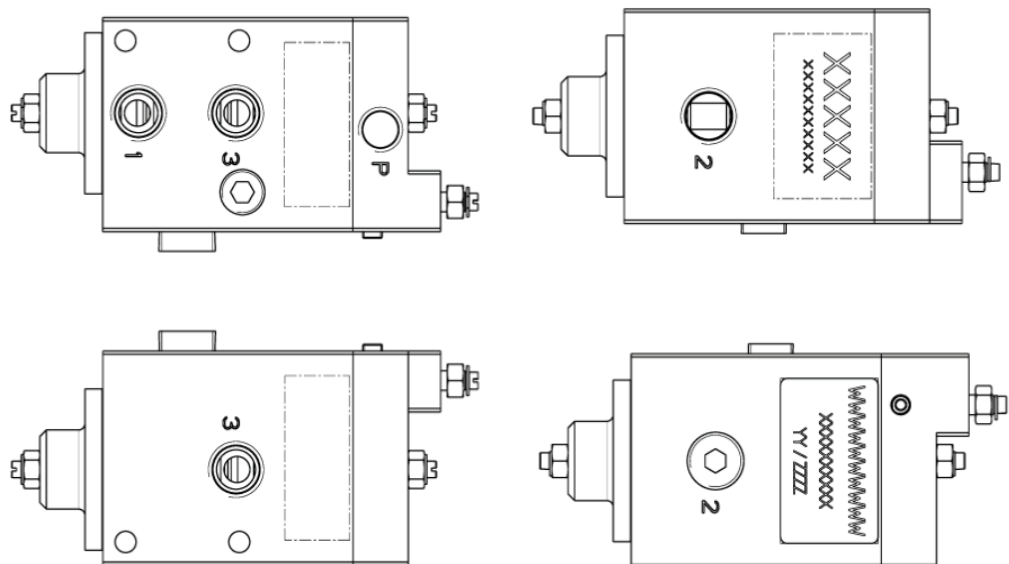
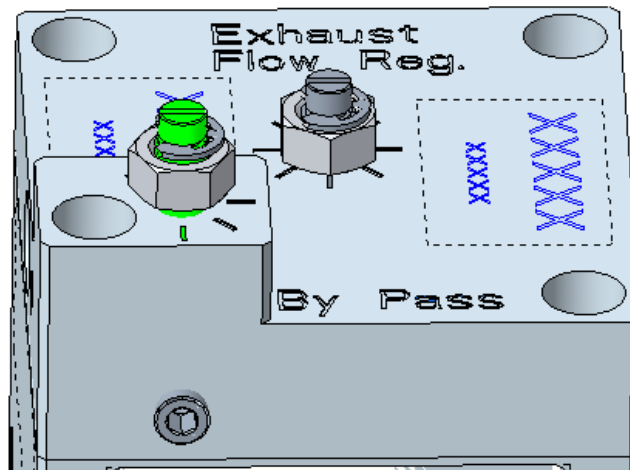


Figure 6. Biffi Booster Drawing View with Double Regulations



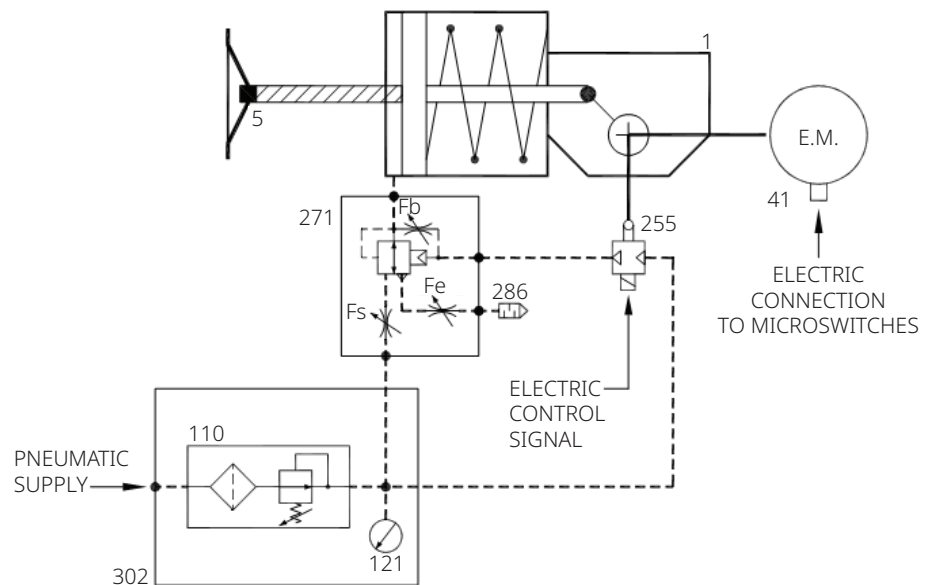
The Bypass function is to avoid hunting on actuator operation: before actuator start-up, it is necessary to set the bypass action. Loosen the locknut and operate with screwdriver to the setting screw, turning it in clockwise or counterclockwise direction until reach the system balancing. Bypass can be excluded (totally screwing the needle valve on booster cover).

Figure 7. Bypass Loosing Lock-nut and Needle for Adjustment



3.2 Setting of Actuator's Operating Time by Booster

Figure 8. Example of Actuator's Operating Diagram with Pneumatic Booster



Legends:

1	Single acting spring-return pneumatic actuator
5	Manual override
41	Electric microswitches
110	Filter regulator
121	Pressure gauge
255	Single acting electropneumatic positioner
271	Pneumatic booster + bypass
286	Dust excluder
302	Panel
Fe	Exhaust flow regulator (adjustable)
Fs	Supply flow regulator (adjustable)
Fb	Bypass

Regulating Service

- The angular moves the valve up to reach the angular position corresponding to the electric control signal valve.
- The opening time is adjustable by the flow regulator Fe.
- The closing time is adjustable by the flow regulator Fe.

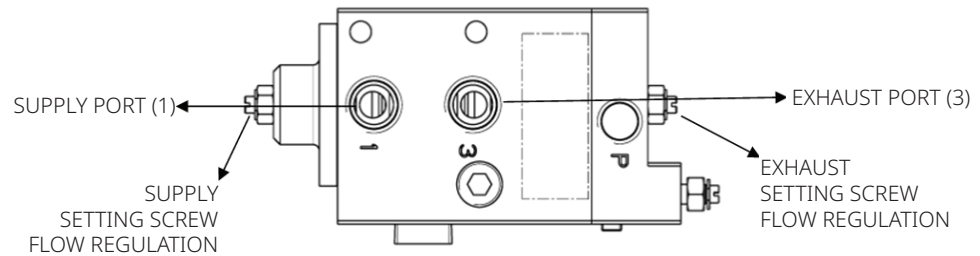
Emergency Manual Operation

Turn the jackscrew 5 until valve completely closed.

Note: The jackscrew must be completely unscrewed to allow remote control.

The pneumatic booster can be supplied completely with control device for both supply and exhaust flow or without flow regulators.

Figure 9. Booster Air Ports and Screw Regulator



Loosen the locknut and turn the setting screw clockwise to decrease the flow and consequentially the speed of related actuator operation (on delivery or on discharge).

This page is intentionally left blank.

Biffi Italia s.r.l.
Strada Biffi 165
29017 Fiorenzuola d'Arda (PC)
Italy
T +39 0523 944 411

For complete list of sales and manufacturing sites, please visit
www.biffi.it or contact us at biffi_italia@biffi.it

VCIOM-16888-EN © 2021, 2024 Biffi. All rights reserved.

The contents of this publication are presented for informational purposes only, and while every effort has been made to ensure their accuracy, they are not to be construed as warranties or guarantees, express or implied, regarding the products or services described herein or their use or applicability. All sales are governed by our terms and conditions, which are available upon request. We reserve the right to modify or improve the designs or specifications of such products at any time without notice.

