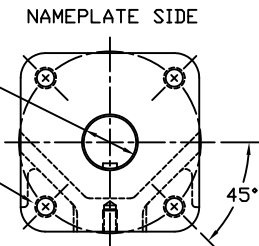


2.000/1.994 DIAMETER SHAFT
 1/2 SQ. x 3.19 LONG KEYWAY
 W/ .031 RADIUS INSIDE KEYWAY CORNERS
 (TO BE USED W/ 1/2" x 3 3/16" KEY)

3/4-10 UNC TAP x 1.18 DEEP
 (4) PLACES AS SHOWN ON
 6.50 DIAMETER BOLT CIRCLE



VIEW B-B
 ISO (F16) MOUNTING PATTERN

MORIN Birmingham, AL			
TITLE: MODEL HP25UC-4-1DA ACTUATOR			
DRAWN BY: CAW	DATE: 08/22/06	CHECKER:	DATE:
APPROVAL:	DATE:		
SCALE: HALF	REVISION: D	DRAWING NO.:	
SHEET 1 OF 1	DWG. SIZE: D	HP25B510D	

REV	CHANGE	BY	CHK	APR	DATE
D	UPDATED SECTION A-A & HOUSING COVER TO CANTED	CAW			08/03/09
C	REMOVED REF. DIM. ON HP CAP NUT/EXTENDED OA DIM.	CAW			04/16/08
B	UPDATED SECTION A-A & VIEW B-B	CAW			02/21/07